



Teale Street
London, E2 9AA
£1,750 PCM


elms
ESTATES

Elms Estates are delighted to bring to the market To Let this lovely One Double bedroom flat situated on the second floor.

The property is situated on Teale Street with excellent access to the Vibrant Broadway Market that offers an array of shops and dining experiences. You will also be placed between the Beautiful Open Spaces of Haggerston Park and London Fields and with the Regents Canal at the end of the Road a short Scenic Walk will find you enjoying the Relaxed, Cool Feel of Victoria Park and the weekly Farmers Market will make for wonderful lazy Sunday morning strolls. This property really is set within the Heart of the East End with easy access to all of the Restaurants, Bars, Shops, Markets, Gyms, Parks, Galleries and Museums this Exciting Area has on offer.

Transport wise, you are within easy reach of multiple bus routes into the City, West End and beyond and both Bethnal Green Tube and Cambridge Heath Overground Stations are within walking distance.

The property is available from 20 February 2025. An early internal inspection is highly recommended in order to avoid disappointment.

For more information or to arrange a viewing please do not hesitate to call in and speak with one of our Property Consultants.



Reception Room

13'5" x 12'9" (4.11 x 3.89)



Bathroom

Kitchen

11'3" x 6'9" (3.45 x 2.06)



Bedroom

12'11" x 9'10" (3.96 x 3.02)

Material Information

Deposit: £2,019.23

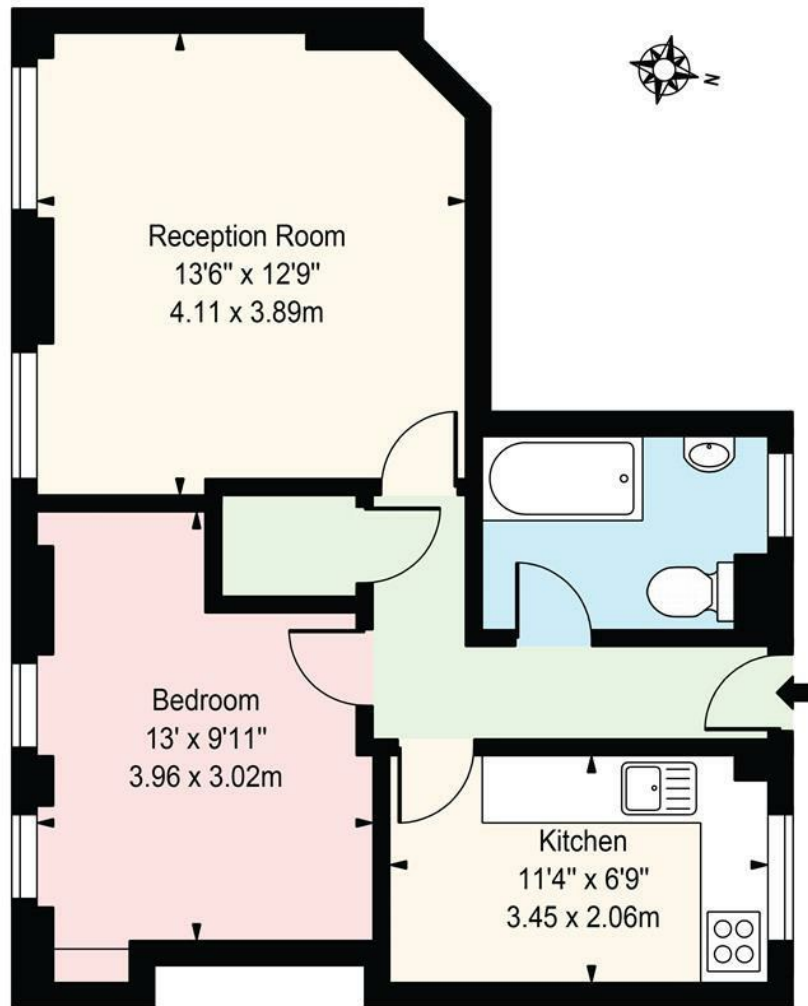
Length Of Tenancy: One Year

Council Tax Band: B



April Court, E2

Approx. Gross Internal Area 492 Sq Ft - 45.71 Sq M



Second Floor

For Illustration Purposes Only - Not To Scale

